



JRB ART
AT THE ELMS
Pasco Arts District

EXHIBITIONS: CLOSING & OPENING

EXHIBITIONS CLOSING:
CATHERINE ADAMS
ALLEN BIRNBACH
CHRISTA BLACKWOOD
PAUL MOORE
BRETT WESTON

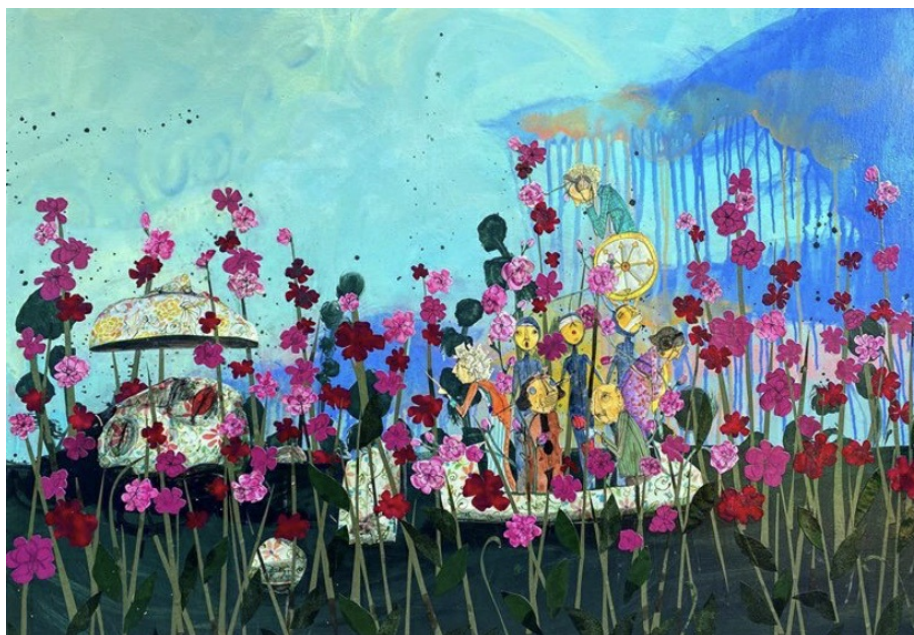
**EXHIBITION WILL BE ON
DISPLAY UNTIL
SATURDAY, AUG. 29, 2020**



Brett Weston, "Desert Landscape, New Mexico," 1971, Silver Gelatin Print, 7 5/8 x 9 1/2 in.

EXHIBITIONS OPENING:
DENISE DUONG
GABRIEL FRIEDMAN
REBECCA WHEELER

**EXHIBITION WILL BE ON
DISPLAY STARTING
THURSDAY, SEPT. 03, 2020**



Denise Duong, "What Lies Beneath," 2020, Mixed Media on Canvas, 36 x 28 in.

[SIGN UP](#)

EXHIBITION VIEWING OPPORTUNITY! Instead of having our First Friday Opening Reception, we are having sign up opportunities to see this extraordinary exhibition on Thursday, Friday, and Saturday from 11:00 am to 6:00 pm!

2810 N Walker Ave | jrbartgallery.com | 405.528.6336

